



THE CLARITY AND SUBSTANCE OF FINE CABINETRY

Give your space a superior appearance with our furniture grade cabinetry. Create the perfect look from our finishes and styles that gives your project a personality as vibrant and sophisticated as your own.



R.D. HENRY & CO.

ESTD 1981 We make cabinets. You add life.



Style Options

- 104 door styles
- 104 drawer fronts
- Around 200 standard stains and paints
- 84 premium packaged finishes
- Custom paint match program
- 4 glazes, brushed or wiped
- Framed or full-access
- Storage accessories
- 19 posts and legs
- 106 moldings
- 10 door edges



R.D. HENRY & CO.

© 2019 R.D. HENRY & COMPANY, LLC. ALL RIGHTS RESERVED



RDHENRY.COM

Standard Stains

		WOOD SPECIES						
STAINS		ALDER AND KNOTTY ALDER	BEECH AND RUSTIC BEECH	CHERRY AND RUSTIC CHERRY	HICKORY	MAPLE	OAK	QUARTER-SAWN OAK
ARTISAN COLLECTION	Bark							
	Butter Pecan							
	Café							
	Calico					*		
	Canyon Sunset				*	*		
	Caramel Apple		*			*		
	Cinnamon					*		
	Cranbrook							
	Early Autumn					*		
	Espresso Bean							
	Flatiron		*	*		*	*	
	French Press		*				*	*
	London Fog				*	*		
	Mocha							
	Natural							
	Pacific Coast		*			*		
	Pitch Black			*				
	River Rock							
	Root Beer		*				*	*
	Sienna					*		
Spiced Cider					*			
Spiced Rum	*		*	*				
Sweet Mist								
Tudor Brown	*							
Vermont		*		*	*	*	*	
White Wash		*	*	*	*	*	*	
Willamette	*		*		*	*	*	
CLASSIC COLLECTION	1/2 Fruitwood							
	Fruitwood							
	Nutmeg					*		

Storage Solutions and Embellishments

We offer a variety of storage solutions and accessories that allow you to customize your space to fit your personal style and needs. Below are some of our most requested features.



Base rollout trays



Spice pullouts



OXO storage unit



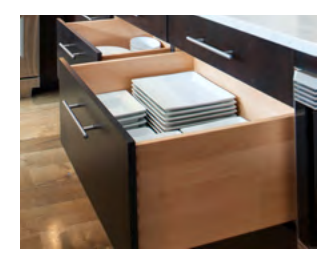
Knife block utensil bin unit



Utensil bin unit



Rollout trays in tall cabinets



Heavy-duty wide drawers



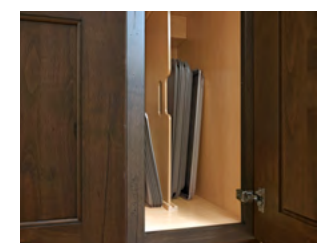
Pop-up mixer



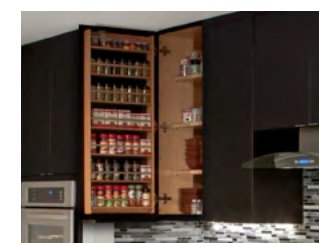
Solid wood cutlery tray



Spice wood insert



Solid wood tray dividers



Wall spice rack



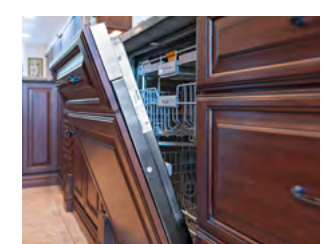
Lazy Susan



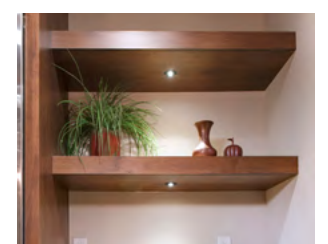
LeMans shelves



Drawer peg system



Applied appliance panels



Floating shelves



Knife tray



Trash bin pullout



Corbels



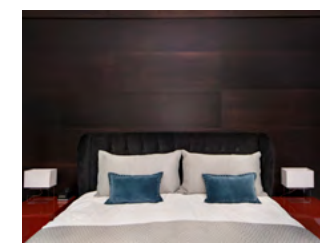
Platforms



Finished interiors



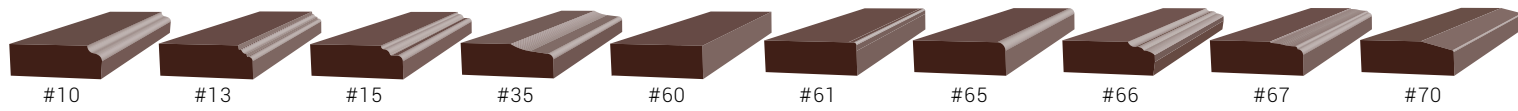
Glass doors



Wood panels

Check out the full list of accessories and modifications at our website, RDHenry.com

Door Edge Profile Options



Glazing Options and Techniques

TECHNIQUE OPTIONS



Wiped Glaze highlighting is applied to the entire surface of the cabinet and doors and then wiped off leaving hang-up in the recessed areas.



Brushed Glaze is a special technique that leaves brush streaks over the entire surface. Glaze, in any application, will vary slightly from cabinet to cabinet.

FOR STAINS



FOR PAINTS



Cabinet Construction

Heartland Framed Cabinetry

An American traditional style cabinet construction. Heartland features a face frame on the face of a 1/2" plywood (furniture-board option available) with a 1 1/2" by 3/4" solid wood frame. It also features 3" I-beams on the base cabinets to maximize squareness and strength possible. Shelves are 3/4" thick and are fully adjustable.

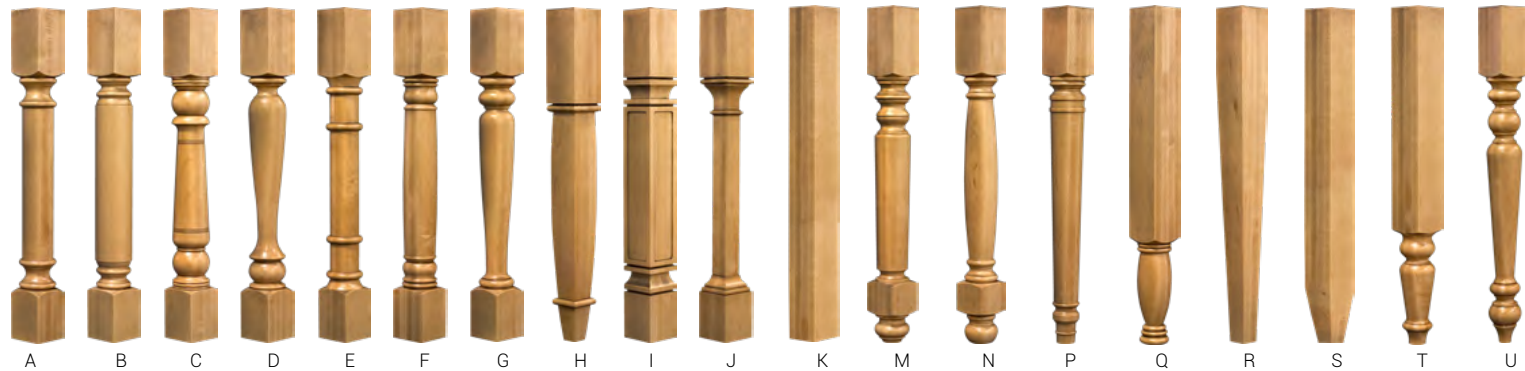


RĒVOLA Full Access Cabinetry

An European style cabinet construction type, or a box without a frame on the front of the cabinet. The doors and drawers are hinged to the walls of the box, which allows for maximum accessibility to the interior of the cabinet that is built 3/4" thick and can be ordered in plywood or furniture board.



Posts and Legs



Standard Paints



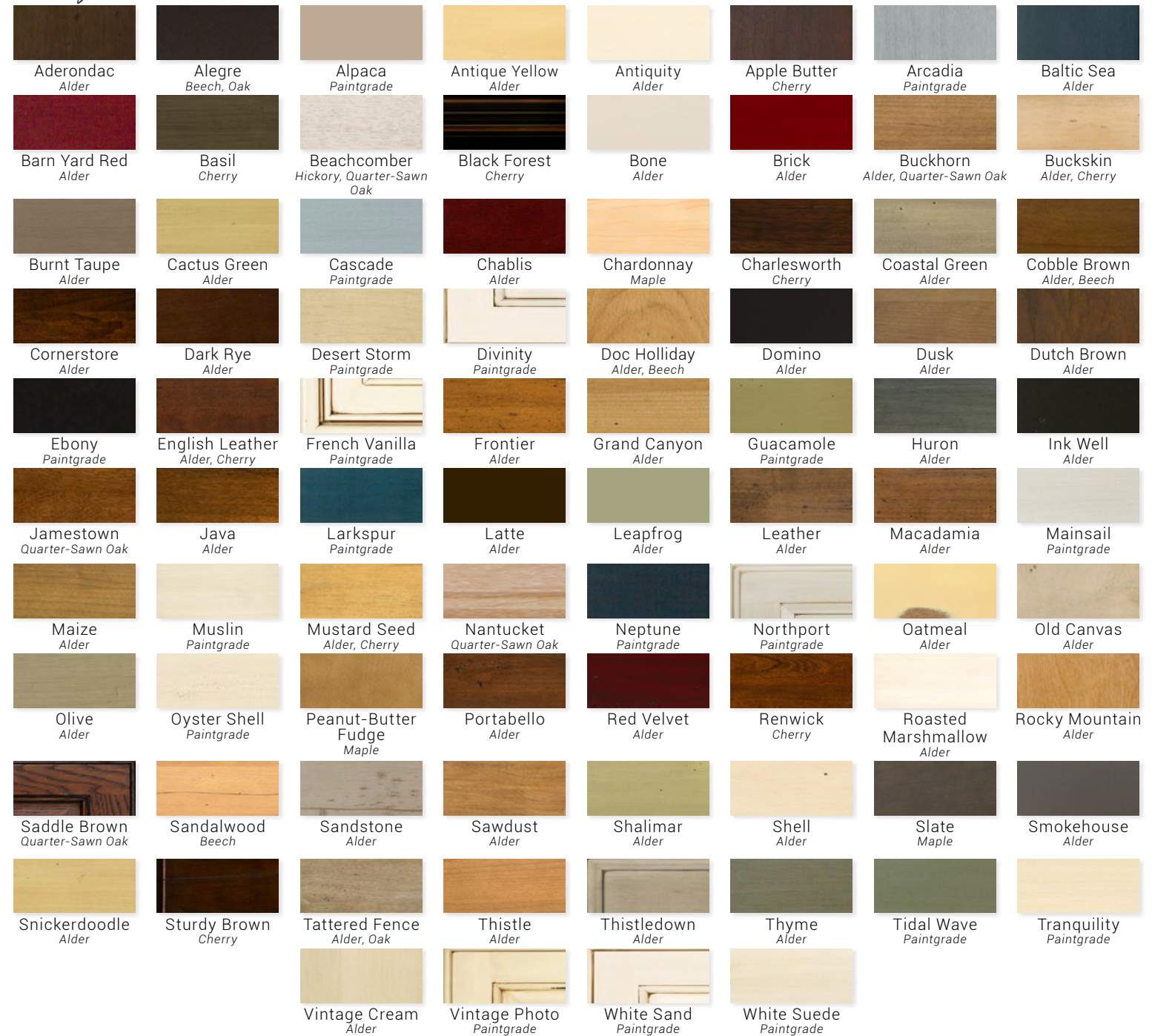
PAINT COLOR MATCH

Color plays an important part in designing a dream kitchen. To make the design process easier, we have a Custom Paint Match Program that allows you to offer paint matching from several



mainstream fan-decks such as, Sherwin-Williams, Behr, Glidden, Ralph Lauren, Pratt & Lambert, Benjamin Moore, Farrow & Ball and many more. See our website for a complete list of available fan decks.

Packaged Finishes



Door Styles

UP-CHARGE RANGES

S Standard
 ◇ \$
 ◇◇ \$\$
 ◇◇◇ \$\$\$

Contempo I S	Contempo II S	Contempo III S	Chisholm 1-PC S	Lexington 1-PC S	Shaker 1-PC S	Valley Forge 1-PC S	Vallejo Mission 1-PC S	Modesto Mission 1-PC S	Stafford 1-PC S	Salem 1-PC S	Hudson 1-PC S	Arlington Flat Panel ◇	Savoy ◇	Tuscan Flat ◇
Shaker S	Valley Forge ◇	Mesa Flat ◇	Vallejo Mission S	Modesto Mission S	Penbrook ◇	Huntington ◇	Brighton ◇	Belmont ◇	Craftsman ◇	Santiago Mission ◇	Taos 2 1/4" S	Taos 2 3/4" ◇	Taos 3 1/2" ◇	Country Shaker ◇
Stafford S	Salem ◇	Naples 2 1/4" S	Naples 2 3/4" ◇	Naples 3 1/2" ◇	Cambria ◇	Windsor Flat ◇	Windsor Beadboard ◇	Mesa Beadboard ◇	Grooved Shaker ◇	Beadboard Shaker ◇	Huntington Beadboard ◇	Stafford Beadboard ◇	Salem Beadboard ◇	Chisholm Classic S
Lexington ◇	Valley Forge Raised ◇	Providence ◇	Richmond ◇	Wilson ◇	Vienna Classic ◇	Windsor Classic ◇	Brentwood Classic ◇	Heritage Classic S	Valley Forge Beaded ◇	Arlington Beaded ◇	Covington ◇	Concord ◇	Venice 2 1/4" S	Venice 2 3/4" ◇
Venice 3 1/2" ◇	Charleston ◇	Chisholm Beaded ◇	Timberline ◇	Delano ◇	Tuscan ◇	Windsor Beaded ◇	Heritage Beaded ◇	Soho ◇	Sterling Raised ◇	Sterling Flat ◇	Stanton Raised ◇	Stanton Flat ◇	Clairmont ◇	Bradford ◇
Alcott ◇	Alcott Flat ◇	Ralston Flat ◇	Ralston Beadboard ◇	Stonewall ◇	Newport ◇	Chisholm w/AM1 ◇	Valley Forge w/AM15 ◇	Valley Forge Bead w/AM2 ◇	Valley Forge Bead w/AM15 ◇	Charleston w/AM1 ◇	Charleston w/AM3 ◇	Chisholm Bead w/AM1 ◇	Delano w/AM1 ◇	Shaker w/AM1 ◇
Shaker w/AM4 ◇	Shaker w/AM14 ◇	Shaker w/AM15 ◇	Valley Forge w/AM4 ◇	Valley Forge w/AM12 ◇	Valley Forge w/AM15 ◇	Craftsman w/AM15 ◇	Heritage Beaded w/AM2 ◇	Heritage Beaded w/AM15 ◇	Heritage Classic w/AM15 ◇	Stafford w/AM1 ◇	Salem w/AM1 ◇			

STYLE CATEGORY

- Veneer Slab
- One-Piece MDF
- Flat Panel
- Beadboard Panel
- Classic Raised
- Beaded Raised
- Mitered Panel
- Applied Molding